

SILVER PEAK'S NX SERIES APPLIANCES



NX-2500
The NX-2500 supports 2 Mbps of WAN bandwidth and 250 GB of local data store.



NX-3500
The NX-3500 supports 10 Mbps of WAN bandwidth and 500 GB of local data store.



NX-5500
The NX-5500 supports 50 Mbps of WAN bandwidth and 2 TB of local data store.



NX-7500
The NX-7500 support 800 Mbps of WAN capacity (155 Mbps with all features enabled) and 2 TB of local data store.



NX-8500
The NX-8500 support 800 Mbps of WAN capacity (500 Mbps with all features enabled) and 7 TB of local data store.

> LOCALIZE INFORMATION, CENTRALIZE CONTROL

Silver Peak NX Series appliances reduce IT costs and enhance enterprise-wide data security and compliance by enabling the centralization of branch office servers and storage. In addition, they improve the performance and reliability of backup, replication, and recovery across a Wide Area Network (WAN), making Silver Peak strategic to enterprise business continuity.

The NX Series appliances leverage Local Instance Networking (LIN) to achieve secure, scalable application delivery and significantly improved performance over existing application acceleration approaches. Local Instance Networking effectively localizes information in each office while retaining control where it belongs – centrally. Deployment of the NX Series requires absolutely no client, server, or application reconfiguration.

NX SERIES APPLIANCES

Desned to fit seamlessly into any enterprise network, Silver Peak offers the following NX Series appliances:

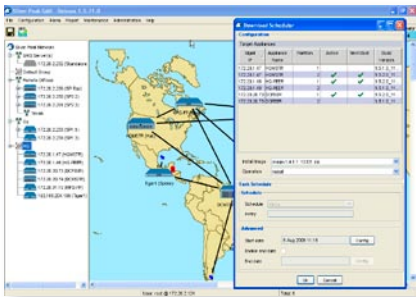
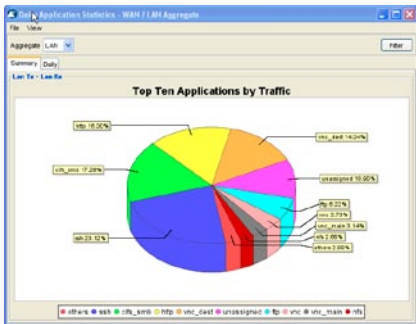
- **NX-2500:**
1 RU appliance that supports 2 Mbps of WAN bandwidth and includes 250 GB of secure local data store. The NX-2500 is optimized for remote and branch offices.
- **NX-3500:**
2 RU appliance that supports 10 Mbps of WAN bandwidth and 500 GB of secure local data store in a RAID configuration. The NX-3500 is ideal for mid-size offices.
- **NX-5500:**
3 RU Appliances that supports 50 Mbps of WAN bandwidth and 2 TB of secure local data store in a RAID configuration. The NX-5500 brings application acceleration to the medium and large offices.
- **NX-7500:**
3 RU appliance that support 800 Mbps of WAN bandwidth (155 Mbps with all features enabled) and 2 TB of secure local data store in a RAID configuration. The NX-7500 is intended for deployment in large facilities, such as corporate data centers.

- **NX-8500:**
3 RU appliance that support 800 Mbps of WAN bandwidth (500 Mbps with all features enabled) and 7 TB of secure local data store in a RAID configuration. The NX-8500 is intended for deployment in larger enterprise facilities, such as regional hubs, multi-national data centers, and disaster recovery locations.

FEATURES

- **Network Memory™**
Each NX Series appliance inspects WAN traffic at the byte-level and stores copies of content for local delivery from its high-capacity hard disk-drive. Advanced finger-printing techniques recognize and match arbitrary-length patterns, minimizing repetition across the WAN. Network Memory™ operates at the network layer and supports all IP-based protocols including TCP, UDP and RTP.
- **Quality of Service**
Per-application traffic management, queuing, scheduling, and standards-based packet-marking guarantee business-critical application availability.
- **Latency and Loss Mitigation**
Latency mitigation techniques minimize the effects of latency on application performance and significantly improve application response time. Adaptive Forward Error Correction corrects for packet loss and reduces the need for retransmissions.
- **Compression**
The NX Series leverage state-of-the-art header and cross-flow payload compression.
- **Security**
The NX Series appliances are the only WAN acceleration appliance with 128 bit encrypted disk drives to protect data stored on the device. IPSec encryption protects data sent between appliances. Hardware acceleration ensures that data security is achieved with little or no impact on application performance.

SILVER PEAK'S NX SERIES APPLIANCES



Silver Peak's Global Management System

ENTERPRISE-CLASS SOLUTION

- **Accelerated Applications**

Local Instance Networking accelerates all browser-and non-browser-based applications. This includes:

- Backup and recovery applications, including both synchronous and asynchronous backup/replication tools from EMC, Netapp, Veritas, Microsoft, and other leading vendors.
- Traditional TCP applications, such as Windows file sharing, MS Exchange, MS Sharepoint, Lotus Notes/Domino, Siebel, Oracle, and VMware.
- UDP applications, such as Veritas Volume Replicator and NFS.
- Interactive applications, like Citrix Presentation Server and remote desktop.
- Real-time applications, like Voice over IP (VoIP) and video streaming.

- **Resilient**

Redundant hardware protects against disk-drive and power failures. Fail-to-wire network interfaces mechanically isolate the appliance in the event of hardware, software, or power failures.

- **High Availability Deployment**

To maximize uptime, NX Series appliances can be deployed redundantly in 1+1 or N+1 configurations, with failover and load-balancing.

- **Easy-to-manage**

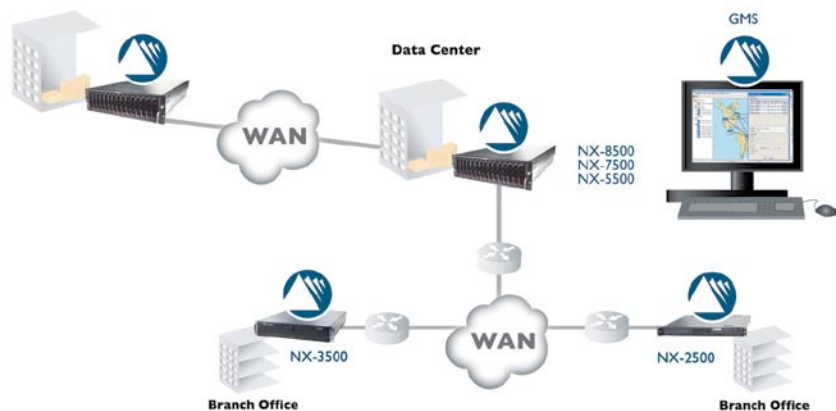
An intuitive Graphical User Interface (GUI) simplifies network monitoring, policy provisioning, and device management. Powerful wizards simplify configuration. A full-featured CLI is available over the DB-9 console port or via SSH.

Larger deployments easily can be managed using Silver Peak's Global Management System (GMS). This is a comprehensive platform for deployment, management, and monitoring of a Silver Peak-enabled WAN. In addition to centralizing the administration of Silver Peak NX Series appliances, GMS provides detailed visibility into all aspects of application delivery across a distributed enterprise, including application behavior, WAN performance, Quality of Service (QoS) policies, and bandwidth utilization.

- **Easy Deployment**

Silver Peak appliances can be deployed in-line between an Ethernet LAN switch and a WAN router, or out-of-path using Policy-Based-Routing (PBR) redirection, Web Cache Coordination Protocol (WCCP), or Virtual Router Redundancy Protocol (VRRP). Multiple appliances can be clustered for increased scalability. Typical deployment takes less than 30 minutes per appliance.

Disaster Recovery Center



Silver Peak Appliances are deployed in each enterprise office, sitting behind a WAN router



MODEL-SPECIFIC SPECIFICATIONS

> CAPACITY	NX-2500	NX-3500	NX-5500	NX-7500	NX-8500
WAN Capacity Maxium	2 Mbps	10 Mbps	50 Mbps	800 Mbps	800 Mbps
WAN Capacity (All Features)	2 Mbps	10 Mbps	50 Mbps	155 Mbps	500 Mbps
Certified Connections	64,000	64,000	64,000	128,000	256,000
Local Data Store	1 x 250GB	2 x 250GB	8 x 250GB	8 x 250GB	14 x 500 GB
> RESILIENCY					
Disk Drives	Single	RAID	RAID	RAID	RAID
Power Supplies	Single	Dual redundant	Triple redundant	Triple redundant	Triple redundant
Network	1+1 and N+1 with VRRP,PBR,WCCP	1+1 and N+1 with VRRP,PBR,WCCP	1+1 and N+1 with VRRP,PBR,WCCP	1+1 and N+1 with VRRP,PBR,WCCP	1+1 and N+1 with VRRP,PBR,WCCP
RAM	ECC memory	ECC memory	ECC memory	ECC memory	ECC memory
> SECURITY					
Disk Encryption	128-bit AES	128-bit AES	128-bit AES	128-bit AES	128-bit AES
Network Encryption	IPSec (128-bit AES)	IPSec (128-bit AES)	IPSec (128-bit AES)	IPSec (128-bit AES)	IPSec (128-bit AES)
> CONNECTIVITY					
LAN/WAN Ethernet	2 x 10/100/1000 LAN/WAN	2 x 10/100/1000 LAN/WAN	2 x 10/100/1000 LAN/WAN	2 x 10/100/1000 LAN/WAN	4 x 10/100/1000 LAN/WAN
Management	2 x 10/100/1000; serial port	2 x 10/100/1000; serial port	2 x 10/100/1000; serial port	2 x 10/100/1000; serial port	2 x 10/100/1000; serial port
> POWER					
Requirement	100-240VAC, 50-60Hz, NX-2500 120W	100-240VAC, 50-60Hz, NX-3500 150W	100-240VAC, 50-60Hz, NX-5500 400W	100-240VAC, 50-60Hz, NX-7500 400W	100-240VAC, 50-60Hz, NX-8500 530W
> DIMENSIONS & WEIGHT					
Height	1.7 in. (43 mm) 1 RU	3.5 in. (89 mm) 2 RU	5.2 in. (132 mm) 3 RU	5.2 in. (132 mm) 3 RU	5.2 in. (132 mm) 3 RU
Width	16.8 in. (427 mm)	17.9 in. (455 mm)	17.7 in. (450 mm)	17.7 in. (450 mm)	17.7 in. (450 mm)
Depth	14.0 in. (356 mm)	22.3 in. (566 mm)	25.5 in. (647 mm)	25.5 in. (647 mm)	25.5 in. (647 mm)
Weight	14 lbs (6.4 kg)	34 lbs (15.4 kg)	65 lbs (29.5 kg)	65 lbs (29.5 kg)	71 lbs (32.2 Kg)

NX-SERIES SPECIFICATIONS

> DEPLOYMENT	
In-line (Bridge) Mode	In-line between Ethernet switch and WAN router with fail-to-wire in case of failure (on all models)
Out-of-Path (Router) Mode	Attached to WAN router out-of-path with policy-based-routing redirection, WCCP, and VRRP (on all models)
> OPTIMIZATION	
Protocols Supported	Transparent support for all IP protocols (such as UDP, TCP, RTP, IPIP, GRE)
QoS	Advanced queuing and standards-based packet marking
Latency and Loss Mitigation	TCP- and CIFS- specific optimizations;Adaptive Forward Error Correction
Compression	State-of-the-art header and cross-flow payload compression
Application Classification	Stateful classification of standard and user-specified applications
> MANAGEMENT	
CLI	Full-featured CLI available over DB-9 console port or via SSH
GUI	Web-based Appliance Manager available via HTTPS (default) or HTTP • Global Management Systems (GMS) provides centralized configuration, monitoring, and management of many NX appliances
SNMP	SNMPv2c traps
Secure Access	SSH and HTTPS
Logging	Syslog with configurable levels. Email alerts
Authentication	Local database, RADIUS, TACACS+
Statistics	Graphing and monitoring, real-time and historical
> ENVIRONMENTAL	
Temperature	50°F to 95°F (10°C to 35°C)
Humidity	8% to 90% relative humidity, non-condensing
> REGULATORY	
EMC	FCC Part 15 Class A, EN 55022 Class A, VCCI Class A, EN 61000-3-2/3-3, EN 55024
Safety	UL/cUL 60950, EN 60950

